



Connecting The Dots... Curbside Management Challenges

Richard B. Easley, President
E-Squared Engineering
Ashburn, VA USA
reasley@e-squared.org

Parking and Transportation Integration: Connecting the Dots

- Every vehicular trip begins and ends with parking



Studies suggest:

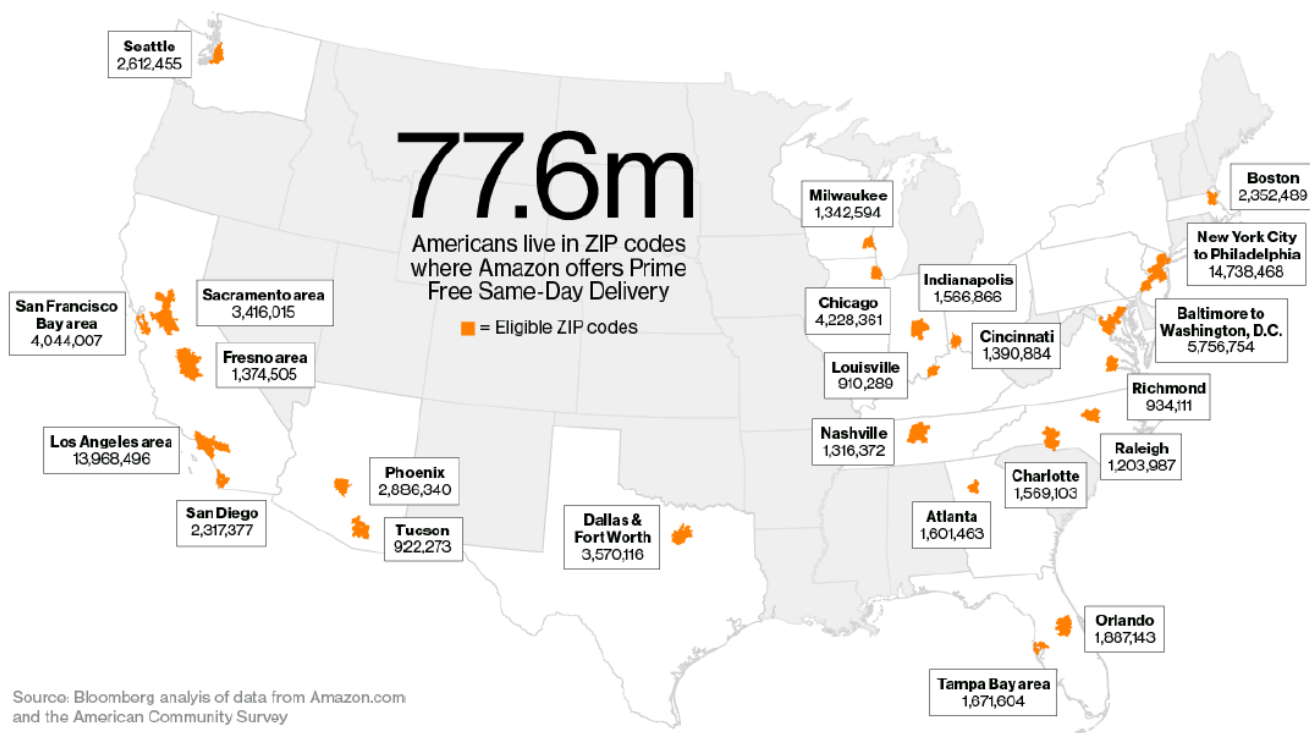
- 30% of urban traffic is looking for parking
- Average time to find a space: 8 minutes

Cruising for Parking – Donald Shoup

The Challenges Are There: Do You See Them??

- Freight

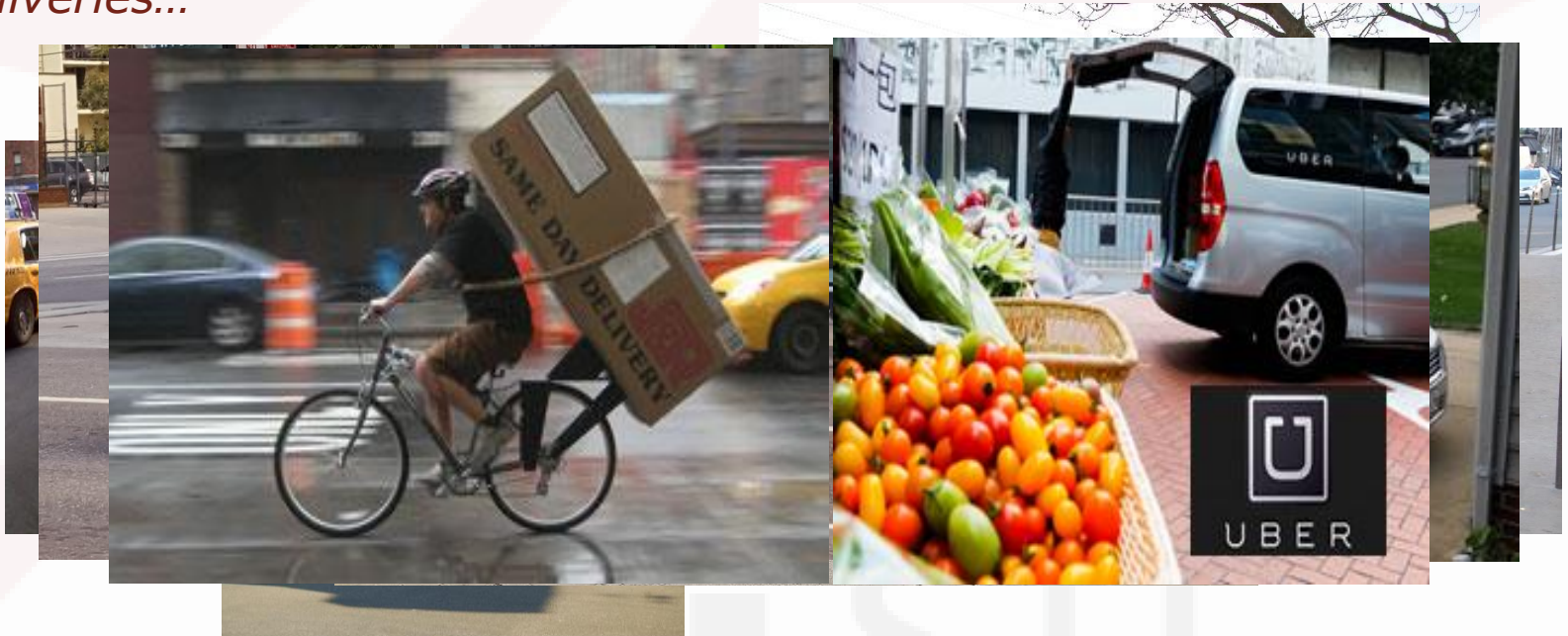
“Free” Same-day Delivery for Prime Members



The Challenges Are There: Do You See Them??

- Freight

Freight delivery vehicles are evolving to meet the needs of consumers, the size and type of parcels, the size of the roadways, city policy restrictions, the frequency of deliveries, the costs of delivery, the hours of deliveries...



The Challenges Are There: Do You See Them??

- Freight

**Loading Zones –
good for
yesterday, but
today's
enforcement
model doesn't
always work...**



This Photo by Unknown Author is licensed under [CC BY-SA](#)

The Challenges Are There: Do You See Them??

- Freight



The Challenges Are There: Do You See Them??

- Freight

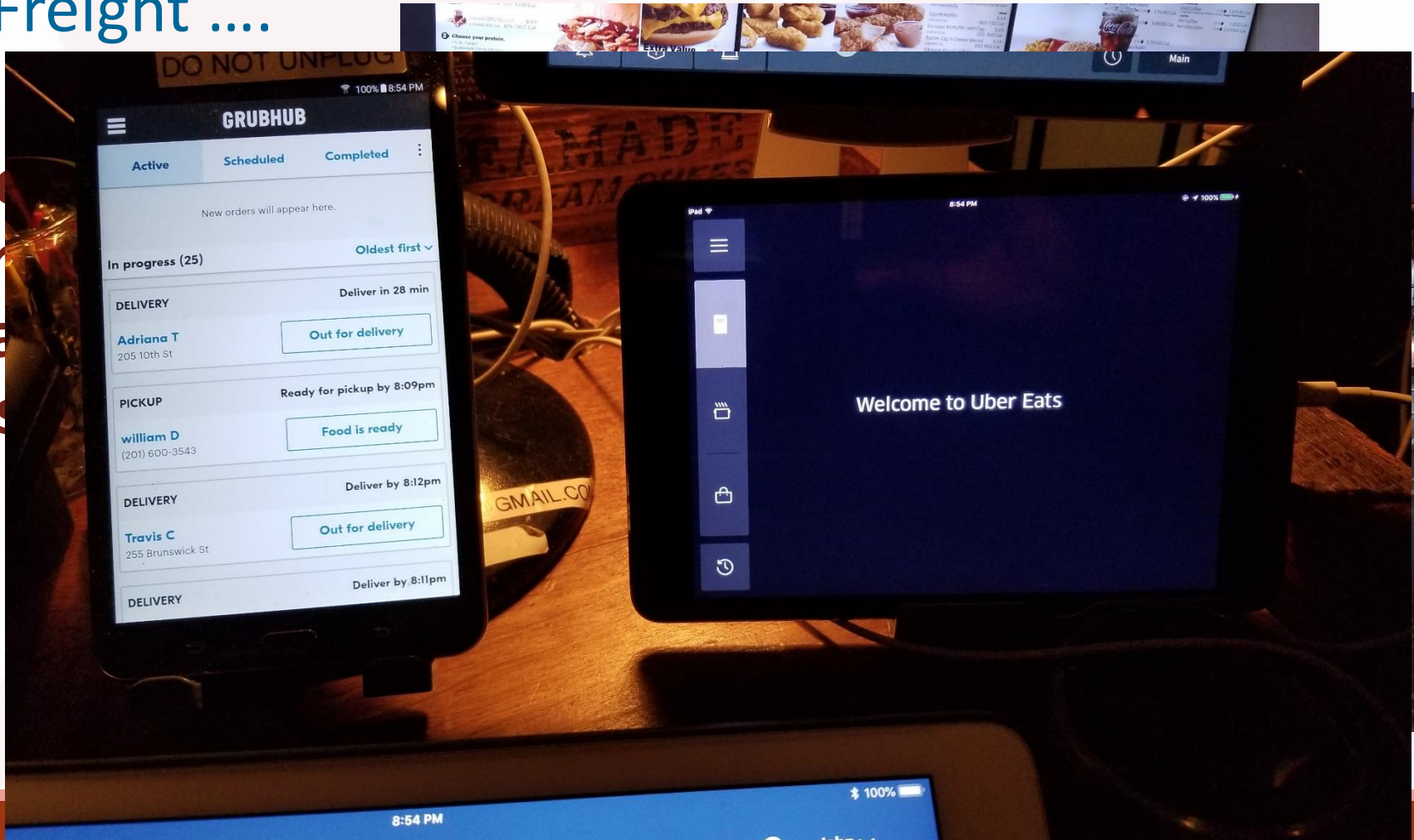
**Transit surely
doesn't deal
with the parking
and freight
issue...**



The Challenges Are There: Do You See Them??

- Freight

Do
dr
pa
iss



The Challenges Are There: Do You See Them??



The Challenges Are There: Do You See Them??

- Car Share



The Challenges Are There: Do You See Them??

- Bike Lanes...

Bicycles
are a good
thing for
everyone,
right?



The Challenges Are There: Do You See Them??

- Food Trucks...



The Challenges Are There: Do You See Them??

- A beautiful oasis...

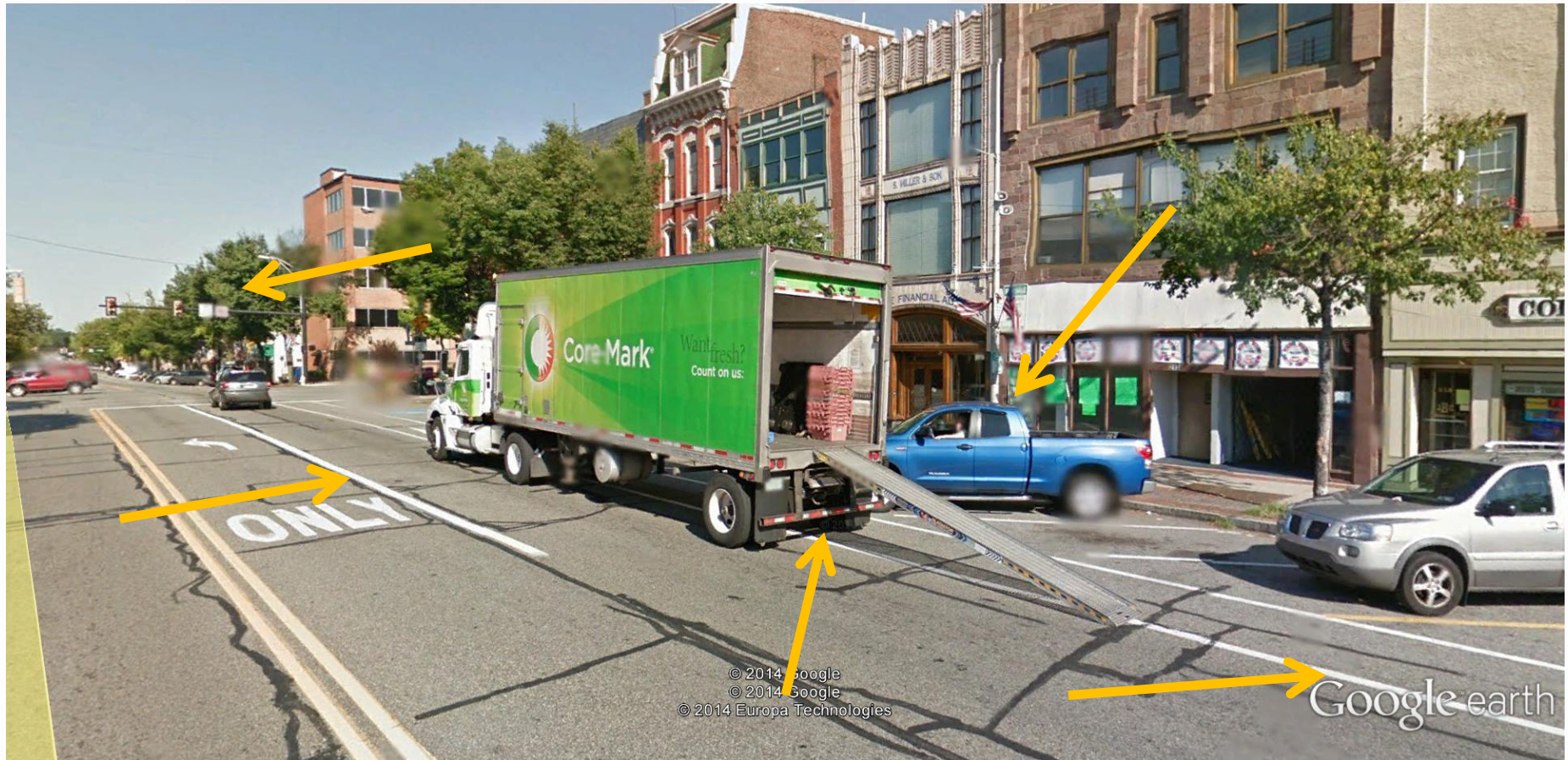




Intelligent Transportation Systems Society of Canada
Société des systèmes de transport intelligents du Canada

The Challenges Are There: Do You See Them??

Everybody CANNOT have everything...





Connecting The Dots... Curbside Management Challenges

Richard B. Easley, President
E-Squared Engineering
Ashburn, VA USA
reasley@e-squared.org